

## green waste

### & FREE MULCH

Council encourages residents and businesses to bring their green waste to Whytes Gully or Helensburgh waste disposal depots. As of 1 July 2009 all garden waste will be required to be separated and deposited to the green waste processing area. It is then turned into mulch, which is available to residents free of charge.

Council cannot guarantee that it will be weed free. It is recommended that the mulch be stored for six weeks before use.

#### Items that CAN be mulched include:

- branches
- fence palings
- logs no greater than 150mm in diameter
- leaves
- brush
- palm fronds
- lawn clippings
- cuttings

#### Items that CANNOT be mulched include:

- timber with bolts or nails
- weeds
- treated and painted timber

Mulched weeds can regrow in your garden and must be separated from your green waste and taken to the tip face.

#### Weeds to watch out for are:

- wandering jew
- pitchfork weeds
- lantana
- blackberry
- thistles
- privet
- crofton weed
- bitou bush

To help you recognise these and other weeds, please ask the attendant for weed information.

## composting

### & RECYCLING

If you would like an additional recycling or green waste bin call **4227 7185**.

Additional 240 litre Recycling bin for domestic premises	\$76.70
Additional 240 litre Green Waste bin	\$76.70
240 litre Recycling bin for commercial premises	\$76.70

Reduce the contents of your red top garbage bin by reusing your food and garden waste. Set up a compost bin or worm farm today.

Find out how by contacting Council's Green Team on **4227 7105**.

Compost bins	\$32.50
Worm farms	\$68.20

## location

### OF WASTE DISPOSAL DEPOTS

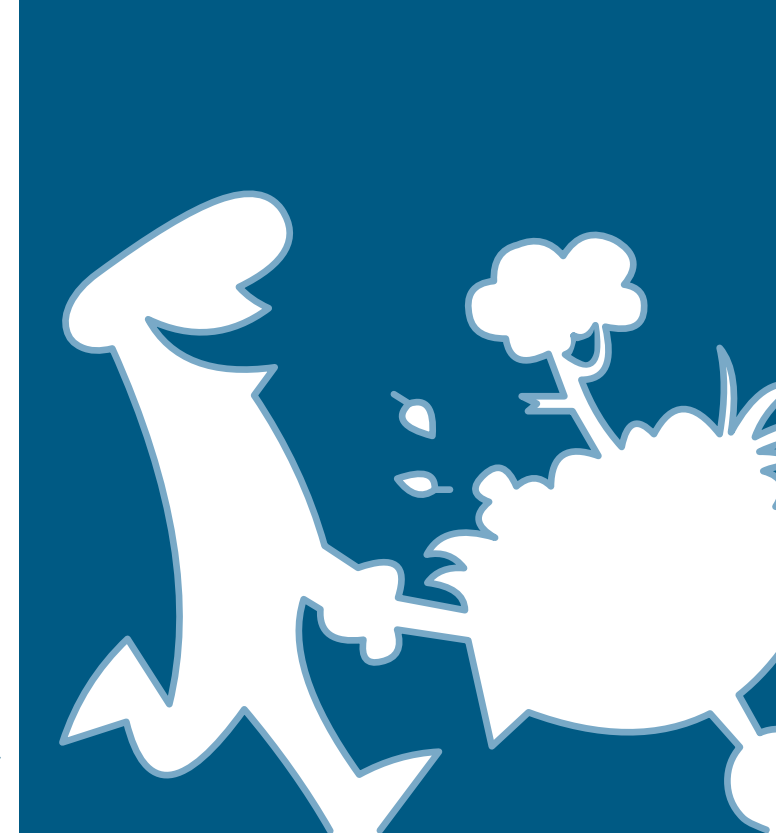
<b>Whytes Gully</b>	Reddalls Road, Kembla Grange
<b>Helensburgh</b>	Nixon Place, Helensburgh
<b>Enquiries</b>	<b>4227 7185</b> Monday to Friday, 9am to 5pm

## hours

### OF OPERATION

	Whytes Gully	Helensburgh
Weekdays	7.30am to 4.30pm	8am to 4pm
Weekends	8am to 4pm	9am to 1pm
Public Holidays	8am to 4pm	8am to 4pm
Good Friday	8am to 4pm	Closed
Christmas Day	Closed	Closed

Effective as at July 2009.



This is printed on 100% recycled uncoated paper made from 100% post-consumer waste.

WOLLONGONG CITY COUNCIL

# Waste depot

FEES & CHARGES 2009-10

## 1. household waste

Material	Charge	Depot
<b>a) GENERAL WASTE</b>		
Small Loads (<150kg) - Pensioners exempt	\$15	Both
Large Loads (between 150kg - 300kg)	\$45	Both
Household loads over 300kg	\$150 per tonne	Both

### Special Notes

- \* Commercial or Business waste not accepted as household waste
- \* Helensburgh Landfill is only licenced to accept dry inert waste that does not contain any food or putrescible waste materials.
- \* After 1 July 2009 mixed loads containing garden waste will not be accepted to landfill. All garden waste will be required to be separated and deposited in the garden waste recycling area.
- \* If you have a mixed weight load containing a specified item please ensure these items can be easily accessible as they must be dropped off prior to weighing your load.

### b) GARDEN & WOOD WASTE

Small Loads (<150kg) - Pensioners exempt	\$4.40	Both
Large Loads (between 150kg - 300kg)	\$12.20	Both
Loads over 300kg	\$70.70 per tonne	Both

- \* Clean and separated garden waste with no soil, litter or contamination. Clean and separated wood waste - no treated (eg CCA), painted or manufactured wood products (eg MDF) accepted.

### c) WASTE CHARGES PER SPECIFIED ITEM

Mattresses	\$22 per item	Both
Car and 4WD tyres (each)	\$5 per item	Both

### d) COMPUTERS & TELEVISIONS

Combined hardrive and monitor set	\$40 per item	Both
Monitor (each)	\$25 per item	Both
Hardrive (each)	\$15 per item	Both
Television - Small (each)	\$30 per item	Both
Television - Large over 60cm (each)	\$40 per item	Both

## 2. commercial & business waste

Material	Charge
<b>a) WHYTES GULLY WASTE MANAGEMENT FACILITY</b>	
Mixed Solid Commercial and Business Waste	\$161.60 per tonne
Garden and Wood Waste	\$70.70 per tonne
Tyres	\$180 per tonne

### Special Notes

- \* Bulk demolition waste is not accepted at Whytes Gully. Accepted at Cleary Brothers Builders Tip at Port Kembla.

### b) HELENSBURGH WASTE MANAGEMENT FACILITY

Non-Putrescible Waste Only	\$161.60 per tonne
Bulk Demolition Waste	\$161.60 per tonne

### Special Notes

- \* Helensburgh landfill is only licenced to accept dry inert waste that does not contain any food or putrescible waste materials.
- \* After 1 July 2009 mixed loads containing garden waste will not be accepted to landfill at either facility. All garden waste will be required to be separated and deposited in the garden waste recycling area.

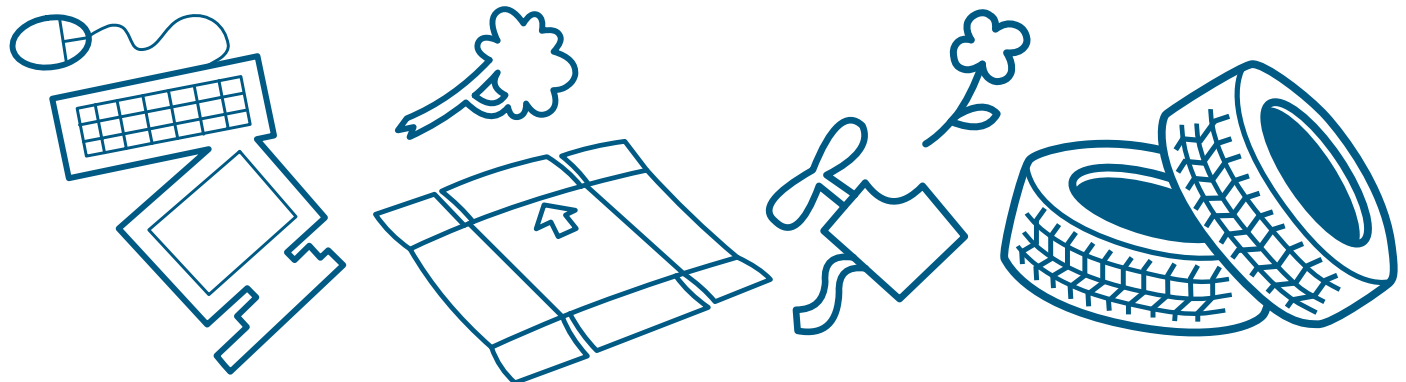
Garden and Wood Waste	\$70.70 per tonne
-----------------------	-------------------

- \*Clean and separated garden waste with no soil, litter or contamination. Clean and separated wood waste - no treated (eg CCA), painted or manufactured wood products (eg MDF) accepted.

Commercial tyres not accepted

### c) FEES IN THE EVENT OF WEIGHBRIDGE FAILURE

Trucks up to 5 tonne tare	\$80.80 per load
Trucks over 5 tonne tare	\$161.60 per load
Weighbridge Tare Ticket	\$27.80 per weighing



## 3. special waste disposal

Material	Charge	Depot
<b>a) SPECIAL WASTE</b>		
Commercial only	\$195 per tonne	Both

\*Including waste requiring immediate or supervised burial or special handling; fish or animal processing waste; polystyrene loads; loads greater than 25% paper and or cardboard; product destructions; sewage ash or git or contaminated soils (excluding asbestos) approved by the NSW EPA for disposal at Whytes Gully as Inert Waste.

### b) DISPOSAL OF ANIMALS - Commercial and Domestic

Small size animals (dog/cat)	\$10	Whytes Gully
Medium size animals (sheep/goat)	\$60	Whytes Gully
Large size animals (cow/horse)	\$130	Whytes Gully
Animals disposed of by RSPCA	No Charge	Whytes Gully

## 4. other waste

Material	Charge	Depot
Cleanfill	No Charge	Both

\*Cleanfill must be Virgin Excavated Natural Material (VENM) and must not be from a contaminated site. Council reserves the right to reject or cease accepting cleanfill material at its sole discretion. For large quantities in excess of 5,000 cubic metres please contact Council to make special arrangements.

Car bodies	No Charge	Both
Metals	No Charge	Both